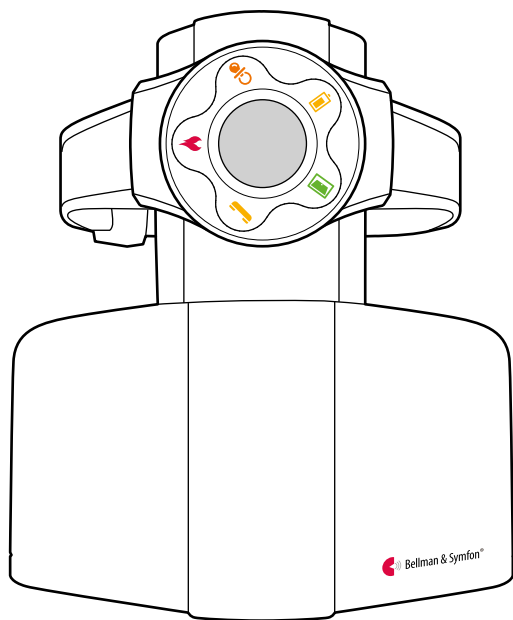


BE8102  
Visit wrist receiver





## BE8102 Visit wrist receiver

---

**3** Bedienungsanleitung

---

**7** Brugervejledning

---

**11** User manual

---

**15** Manual de usuario

---

**19** Käyttöopas

---

**23** Mode d'emploi

---

**27** Gebruiksaanwijzing

---

**31** Brukermanual

---

**35** Bruksanvisning

---

DE

DK

EN

ES

FI

FR

NL

NO

SE

## Read this first

This booklet guides you on how to use and maintain your new wrist receiver. Ensure you read this booklet carefully, including the **Warnings** section. This will help you get the most out of your product. If you have additional questions, contact your hearing care professional.

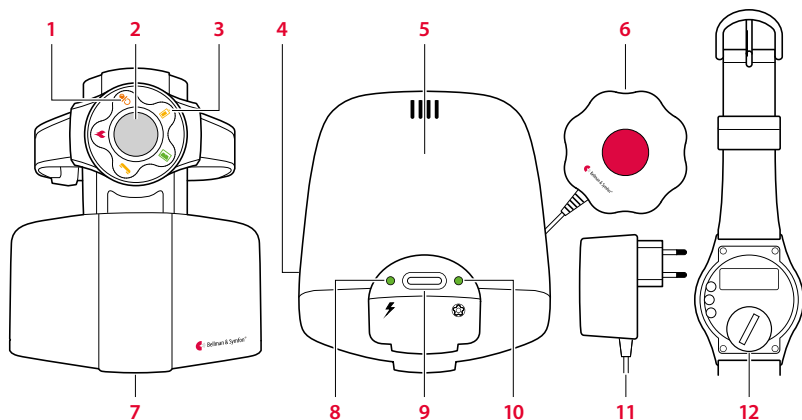
**Intended purpose** The intended purpose of the Visit system is to alert deaf and hard of hearing people of important signals in their home.

**Intended user** A person with mild to severe hearing loss or deafness.

**Intended user group** The intended user group consists of people of all ages with mild to severe hearing loss or deafness that need audio, visual or sensory amplification.

**Principle of operation** The Visit system consists of a set of wirelessly connected transmitters and receivers that are located across the home. When a transmitter detects an activity, it signals the Visit receiver that alerts the user with sound, flashes or vibrations. In order to use the system, you need at least one transmitter and one receiver.

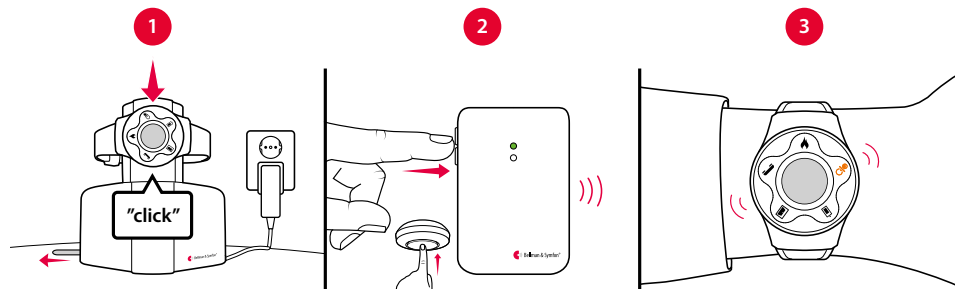
## Overview



- |                   |                    |                   |                 |
|-------------------|--------------------|-------------------|-----------------|
| 1 Visit LEDs      | 4 Bed shaker port  | 7 Charger         | 10 Charging LED |
| 2 Function button | 5 Backup batteries | 8 Mains LED       | 11 Power supply |
| 3 Battery LED     | 6 bed shaker       | 9 Test bed shaker | 12 V40H battery |

## Getting started

- 1 Pull the battery tab on the charger and connect the power supply to the mains outlet. The mains LED (8) lights up in green. Place the wrist receiver in the charger and charge it for at least 2 hours. The charging LED (10) is green during charging.
- 2 To test the radio link you need a Visit transmitter. Press the test button/s on the transmitter.
- 3 The wrist receiver starts to vibrate and lights up a Visit LED (1). If a bed shaker is connected during charging, it will vibrate instead of the wrist receiver. If nothing happens, see **Troubleshooting**.



## Default signal pattern

When a transmitter is activated, the wrist receiver lights up a Visit LED (1) and starts to vibrate with a certain pace. This is called signal pattern. The transmitters determine the pattern, and the default is:

Transmitter	Wrist receiver	Wrist receiver / Bed shaker
<b>Activated source</b>	<b>Visit LED</b>	<b>Vibration</b>
<ul style="list-style-type: none"> <li>Door transmitter</li> <li>Push button transmitter</li> <li>Telephone transmitter</li> <li>Baby monitor</li> <li>Smoke alarm</li> <li>CO alarm</li> </ul>	<ul style="list-style-type: none"> <li>Green</li> <li>Green</li> <li>Yellow</li> <li>Orange</li> <li>Red</li> <li>Orange + Red</li> </ul>	<ul style="list-style-type: none"> <li>Slow ■□□□</li> <li>Slow ■□□□</li> <li>Medium ■■□□</li> <li>Fast ■■■■■■</li> <li>Long ■■■■□</li> <li>Long ■■■■□</li> </ul>

## LED indications

When the wrist receiver battery is nearly depleted, the battery LED (3) starts to blink yellow. The charging time is up to 8 h. The charger is equipped with a battery backup and the charger LEDs indicate the following:

LED	Indication	Status
Charging LED	● Green light	The receiver battery is being charged.
Mains LED	● Green light	The charger is powered by mains voltage.
Mains LED	○ Green blinks	The charger is powered by the battery backup.

## Personalizing your receiver

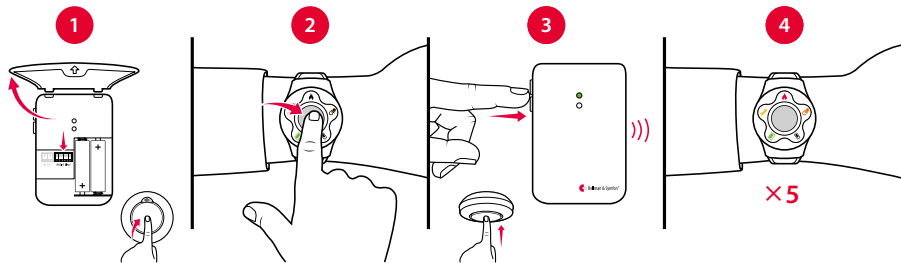
### Changing the signal pattern

The signal pattern can only be changed on the transmitters. See **Changing the signal pattern** for the relevant transmitter.

### Changing the radio key

If your Visit system is activated for no reason, there is probably a nearby system that triggers yours. In order to avoid radio interference, you need to change the radio key on all units. The radio key switches are located on the **transmitters**.

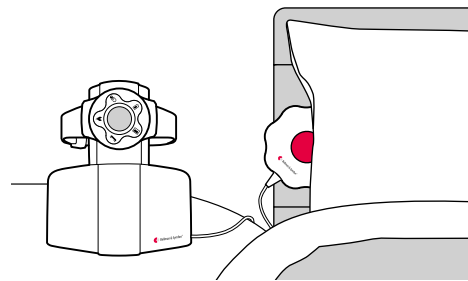
- 1 Open the transmitter cover and move any radio key switch to the up (on) position to change the radio key. See **Changing the radio key** for the relevant transmitter.
- 2 Press and hold the function button on the Wrist receiver until the green and yellow Visit LEDs (1) blink alternately. Release the button.
- 3 Press the test button/s on the transmitter within 30 seconds to send the new radio key.
- 4 All Visit LEDs (1) on the wrist receiver blink 5 times to show that the radio key has been changed. It then returns to normal mode. Please note that all Visit units must be set to the same radio key.



## Using the bed shaker

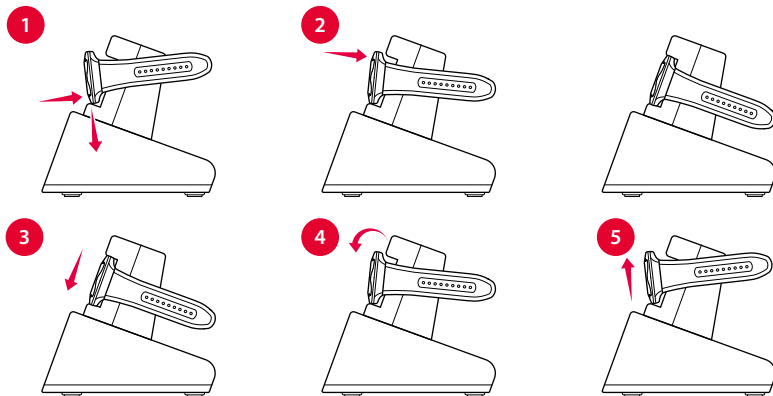
The BE1270 Bed shaker accessory wakes you with vibrations anything happens while you are asleep. Connect it to the charger port and slide it under your pillow or mattress.

Please note that the bed shaker only works when the wrist receiver is placed in the charger. The receiver will not vibrate during charging, but the Visit LEDs will act as usual. To try the bed shaker, press the bed shaker test button on top of the charger.



### Charging the Wrist receiver

- 1 Angle the receiver slightly outwards so that the two small holes on the edge of the wrist receiver point downwards. Press the receiver and the moveable button downwards.
- 2 Move the upper part of the wrist receiver towards the back edge and release carefully. The green LED (X) should light up.



### Removing it from the charger

- 3 Press the wrist receiver and the moveable button downwards.
- 4 Angle the upper part of the wrist receiver.
- 5 Lift the wrist receiver out of the charger.

# General warnings

This section contains important information about safety, handling and operating conditions. Keep this booklet for future use. If you are just installing the device, this booklet must be given to the householder.

## Hazard warnings

- Failure to follow these safety instructions could result in fire, electric shock, or other injury or damage to the device or other property.
- The wrist receiver and charger can only be used with rechargeable NiMH batteries! Non-rechargeable batteries will start to leak if recharged! The acid in the batteries will damage the electronics in the wrist receiver and the charger. The resulting damage will not be covered by any guarantee. **Only use Varta V40H batteries for the wrist receiver and Lexel 600AAA batteries for the charger.**
- Be aware that alarms and notifications can be missed if batteries run out.
- Keep this device out of reach of children under 3 years.
- Batteries are toxic. Do not swallow them! Keep out of reach of children and pets. If they are swallowed, consult your physician immediately!
- Do not use or store this device near any heat sources such as naked flames, radiators, ovens or other devices that produce heat.
- Use only power adapters and battery types that are specified in this leaflet.
- Protect cables from any potential source of damage.
- This device is designed for indoor use only. Do not expose the device to moisture.
- Protect the device from shocks during storage and transport.
- Do not make any changes or modifications to this device. Use only original Bellman & Symfon accessories to avoid any electrical shock.

## Information on product safety

- Failure to follow these instructions could result in damage to the device and void the warranty.
- Do not expose batteries to fire or to direct sunlight.
- Rechargeable batteries should be charged fully before using the device for the first time. Only charge batteries in a temperature between 0°– 35°C, 32°– 95° F.
- If a serious incident occurs in relation to this device, contact the manufacturer and relevant authority.
- Do not drop your device. Dropping onto a hard surface can damage it.
- The device may only be repaired by an authorized service center.
- If you encounter other problems with your device, contact the point of purchase, your

local Bellman & Symfon office or the manufacturer. Visit [bellman.com](http://bellman.com) for contact info.

- Do not use the device in areas where electronic equipment is prohibited.
- Without permission granted by the NCC, no company, enterprise or user is allowed to change the frequency, enhance the transmitting power or alter the original characteristics or performance on an approved low power radio frequency device.
- This device should not be used on aircrafts unless specifically permitted by flight personnel.
- The wrist receiver will not vibrate when it's in the charger. A bed shaker must be connected to the charger to provide a vibratory alert. Other indicators will act as normal. Apart from a bed shaker, it is also possible to connect other products such as some Bellman & Symfon alarm clock models to the vibrator output.

## Configuration options

The BE1560 wrist receiver can be configured with the following Visit transmitters and original accessories:

### Compatible Visit transmitters

- BE1411 Visit door transmitter
- BE1420 Visit pushbutton transmitter
- BE1431 Visit telephone transmitter
- BE1432 Visit mobile phone transmitter
- BE1481 Visit smoke alarm transmitter
- BE1551 Visit smoke alarm transmitter
- BE1555 Visit CO alarm transmitter
- BE1491 Visit baby monitor

### Available accessories

- BE1270 Bed shaker

For detailed product information, see the corresponding user manual.

## Operating conditions

Operate the device in a dry environment within the temperature and humidity limits stated in this leaflet. If the device gets wet or is exposed to moisture, it should no longer be regarded as reliable and should therefore be replaced.

## Cleaning

Disconnect all cables before you clean your device. Use a soft, lint-free cloth. Avoid getting moisture in openings. Do not use household cleaners, aerosol sprays, solvents, alcohol, ammonia or abrasives. This device does not require sterilization.

## Service and support

If the device appears to be damaged or doesn't function properly, follow the instructions

in the user guide and this leaflet. If the product still doesn't function as intended, contact your local hearing care professional for information on service and warranty.

## Warranty conditions

Bellman & Symfon guarantees this product for two (2) years from date of purchase against any defects that are due to faulty materials or workmanship.

This guarantee only applies to normal conditions of use and service, and does not include damage resulting from accident, neglect, misuse, unauthorized dismantling, or contamination howsoever caused. This guarantee excludes incidental and consequential damage. Furthermore, the warranty does not cover Acts of God, such as fire, flood, hurricanes and tornadoes.

This warranty gives you specific legal rights and you may also have other rights that vary with territory. Some countries or jurisdictions do not allow the limitation or exclusion of incidental or consequential damages, or limitations on how long an implied warranty lasts, so the above limitation may not apply to you. This guarantee is in addition to your statutory rights as a consumer. The above warranty may not be altered except in writing signed by both parties hereto.

## Compliance information

Hereby Bellman & Symfon declares that, in Europe, this product is in compliance with the essential requirements of the Medical Device Regulation EU 2017/745 as well as the directives and regulations listed below. The full text of the declaration of conformity can be obtained from Bellman & Symfon or your local Bellman & Symfon representative. Visit [bellman.com](http://bellman.com) for contact information.

---

Radio Equipment Directive (RED)

---

Medical Device Regulation (MDR)

---

Electromagnetic Compatibility Directive (EMC)

---

Restriction of Hazardous Substances Directive (RoHS)

---

REACH Regulation

---

EC General Product Safety Directive.

---

Waste Electrical & Electronic Equipment (WEEE)

---

EC Battery Directive

---

## ISO Certification of legal manufacturer

Bellman is certified in accordance with SS-EN ISO 9001 and SS-EN ISO 13485.

SS-EN ISO 9001 Certification Number: CN19/42071

SS-EN ISO 13485 Certification Number: CN19/42070

### Certification Body


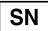










SGS United Kingdom Ltd

Rossmore Business Park Ellesmere Port Cheshire CH65 3EN UK

## Technical specifications

<b>Dimensions &amp; weight</b>	Receiver: 38 × 12 × 49 mm / 1.5 × 0.5 × 1.9", 30 g / 1.1 oz. (including batteries) Charger: 95 × 100 × 117 mm / 3.7 × 3.9 × 4.6", 300 g / 10.6 oz. (including batteries and power adapter)
<b>Mains power</b>	7.5 V DC/1500 mA with power supply unit
<b>Battery power</b>	Receiver: 1 x 1.2 V V40H rechargeable battery Charger: 4 x 1.2 V NiMH rechargeable batteries
<b>Power consumption</b>	Receiver: Active: 100 mA, Idle position: 3 mA Charger: Active 650 mA, Idle position 70 mA
<b>Operation and charging time</b>	Receiver: ~30 h from fully charged, Charging time: ~10 h from fully depleted Charger: Backup battery charging time: ~24 h
<b>Connections</b>	Equipped with a bed shaker jack
<b>Radio frequency</b>	868.30MHz
<b>Coverage</b>	50 – 250 m, 55 – 273 yd. depending on the the characteristics of the building. Coverage is reduced if walls and large objects block the signal.
<b>In the box</b>	<ul style="list-style-type: none"><li>▪ BE1560 Visit wrist receiver</li><li>▪ BE1570 Charger</li><li>▪ Power adapter</li><li>▪ Extra wrist band</li></ul>

# Regulatory symbols

	With this symbol, Bellman & Symfon confirms that the product meets the Medical Device Regulation EU 2017/745.
	This symbol indicates the manufacturer's serial number so that a specific medical device can be identified. It's available on the product and gift box.
	This symbol indicates the manufacturer's catalogue number so that the medical device can be identified. It's available on the product and gift box.
	This symbol indicates the medical device manufacturer, as defined in EU Directives 90/385/EEC, 93/42/EEC and 98/79/EC.
	This symbol indicates that the user should consult the instruction guide and this leaflet.
	This symbol indicates that it is important for the user to pay attention to the relevant warning notices in the user guides.
	This symbol indicates important information for handling and product safety.
	Temperature during transport and storage: -10° to 50° C, 14° to 122° F Temperature during operation: 0° to 35° C, 32° to 95° F
	Humidity during transportation and storage: <90%, non-condensing Humidity during operation: 15% to 90%, non-condensing
	Atmospheric pressure during operation, transportation and storage: 700 hpa to 1060 hpa
<b>Operating conditions</b>	This device is designed such that it functions without problems or restrictions if used as intended, unless otherwise noted in the user guide or this leaflet.
	With this CE symbol, Bellman & Symfon confirms that the product meets EU standards for health, safety, and environmental protection as well as the Radio Equipment Directive 2014/53/EU.
	This symbol indicates that the product shall not be treated as household waste. Please hand over your old or unused product to the applicable collection point for the recycling of electrical and electronic equipment or bring your old product to your hearing care professional for appropriate disposal. By ensuring this product is disposed of correctly, you will help prevent potential negative effects on the environment and human health.

# Troubleshooting

Most problems with the wrist receiver can be solved quickly by following the advice below.

<b>If</b>	<b>Try this</b>
The receiver seems to be turned off	<ul style="list-style-type: none"><li>▪ The battery is depleted. Charge or replace it with a VARTA V40H NiMH battery.</li></ul>
The battery LED blinks in yellow	<ul style="list-style-type: none"><li>▪ The battery level is low. Charge or replace it with a VARTA V40H NiMH battery.</li></ul>
The receiver is not charging	<ul style="list-style-type: none"><li>▪ Check that the receiver is placed correctly in the charger and that the power supply is connected. The mains LED and charging LED should be lit.</li><li>▪ Charge or replace the backup batteries with four 1.2 V NiMH rechargeable batteries.</li></ul>
The receiver does not respond when a transmitter is activated	<ul style="list-style-type: none"><li>▪ Check the transmitter batteries and connections.</li><li>▪ Move the receiver closer to the transmitter to make sure it's within radio range.</li><li>▪ Check that the receiver is set to the same radio key as the other units in the Visit system, see <b>Changing the radio key</b>.</li></ul>
The receiver is activated for no apparent reason	<ul style="list-style-type: none"><li>▪ There is probably another Visit system installed nearby that triggers your system. Change the radio key on all units, see <b>Changing the radio key</b>.</li></ul>
The bed shaker does not vibrate	<ul style="list-style-type: none"><li>▪ Check that the bed shaker is connected and that the receiver is placed in the charger.</li></ul>

For further information about the product visit [bellman.com](https://bellman.com).



# DESIGN FOR EARS™



## Manufacturer

Bellman & Symfon Group AB  
Södra Långebergsgatan 30  
436 32 Askim Sweden  
Phone +46 31 68 28 20  
E-mail [info@bellman.com](mailto:info@bellman.com)  
[bellman.com](http://bellman.com)



Revision: BE8102\_XXIFUXX  
Date of issue: 2022-02-18  
TM and © 2022 Bellman & Symfon AB.  
All rights reserved.